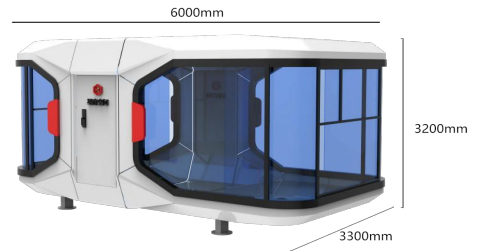




X60 Configuration List

Product Model: Star Nest Space Mobile Cabin X60

Overall dimensions: length 6000mm, width 3300mm, height 3200mm Area: : 20m²



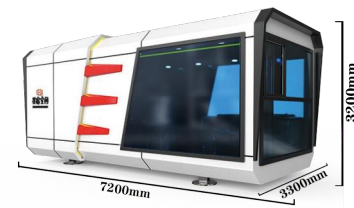
Note: Products continue to be updated and iterative, the picture is for reference only, subject to the final delivery of products

Contents	Details	Standard configuration	Standard Edition	Deluxe Edition
Exterior	Color	White Black Red	★	★
Main structure	Steel Structure Skeleton	Hot-dip galvanized steel structure (with anti-corrosion treatment)	★	★
	Exterior panels	Fluorocarbon aluminum veneer	★	★
	Bathroom wall	Steel Structure & Waterproofing Insulation	★	★
	Waterproof measures	Fully enclosed waterproof technology	★	★
	Insulation measures	Flame retardant thermal insulation (polyurethane)	★	★
	Glass wall	6+16A+6 hollow LOW-E tempered glass	★	★
	Entry door	Advanced Smart Door Lock	★	★
	Support foot	Load-bearing support foot	★	★
Interior decoration	Intelligent system	Whole-house intelligent voice control system (with background music)	★	★
	Ceiling	Fluorocarbon aluminum plate & advanced bamboo charcoal fiber board	★	★
	Wall	Fluorocarbon aluminum plate & advanced bamboo charcoal fiber board	★	★
	Floor	Composite wood floor	★	★
	Indoor lighting effects	Surround indoor atmosphere light strip	★	★
	Curtains	Smart blackout curtains	★	★
Bathroom products	Toilet/bathroom	Wash basin, bathroom mirror, shower, water box, toilet	★	★
Electrical appliances	Water heater	Midea or other brands	★	★
	Bathroom heater	Duct type four-in-one integrated	★	★
	Air conditioner	1.5 HP Gree Air Conditioner	★	★
	Water pipe antifreeze		★	★
Other optional configurations	Skylight			★
	Floor heating			★
	Outdoor lights	Peripheral atmosphere light strip (surround shape)		★
	Projector			★
	Fresh air ventilation system	centralized total heat exchange fresh air system		★
Factory standard configuration	Certificate/Instructions/Product Transportation Protection		★	★

X72 Configuration List

Product Model: Star Nest Space Mobile Cabin X72

Overall dimensions: length 7200mm, width 3300mm, height 3200mm Area : 23.8m²



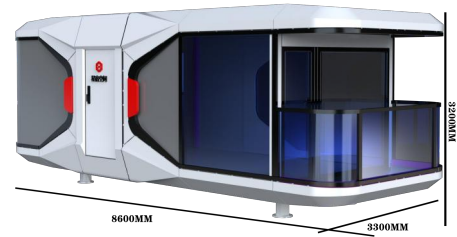
Note: Products continue to be updated and iterative, the picture is for reference only, subject to the final delivery of products

Contents	Details	Standard configuration	Standard Edition	Deluxe Edition
Exterior	Color	White Black Red	★	★
Main structure	Steel Structure Skeleton	Hot-dip galvanized steel structure (with anti-corrosion treatment)	★	★
	Exterior panels	Fluorocarbon aluminum veneer	★	★
	Bathroom wall	Steel Structure & Waterproofing Insulation	★	★
	Waterproof measures	Fully enclosed waterproof technology	★	★
	Insulation measures	Flame retardant thermal insulation (polyurethane)	★	★
	Glass wall	6+16A+6 hollow LOW-E tempered glass	★	★
	Entry door	Advanced Smart Door Lock	★	★
	Support foot	Load-bearing support foot	★	★
	Equipment Room	alone Equipment room	★	★
Interior decoration	Intelligent system	Whole-house intelligent voice control system (with background music)	★	★
	Ceiling	Fluorocarbon aluminum plate & advanced bamboo charcoal fiber board	★	★
	Wall	Fluorocarbon aluminum plate & advanced bamboo charcoal fiber board	★	★
	Floor	Composite wood floor	★	★
	Indoor lighting effects	Surround indoor atmosphere light strip	★	★
	Curtains	Smart blackout curtains	★	★
Bathroom products	Toilet/bathroom	Wash basin, bathroom mirror, shower, water box, toilet	★	★
Electrical appliances	Water heater	Midea or other brands	★	★
	Bathroom heater	Duct type four-in-one integrated	★	★
	Air conditioner	1.5 HP Gree Air Conditioner	★	★
	Water pipe antifreeze		★	★
Other optional configurations	Skylight			★
	Floor heating			★
	Outdoor lights	Peripheral atmosphere light strip (surround shape)		★
	Projector			★
	Fresh air ventilation system	centralized total heat exchange fresh air system		★
Factory standard configuration	Certificate/Instructions/Product Transportation Protection		★	★

X86 Configuration List

Product Model: Star Nest Space Mobile Cabin X86

Overall dimensions: length 8600mm, width 3300mm, height 3200mm Area: : 28.38m²



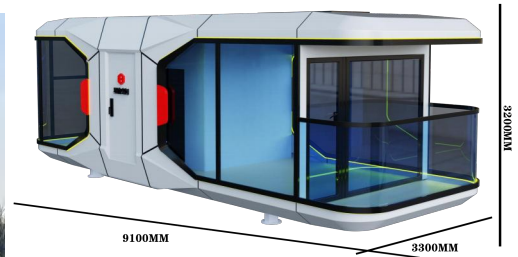
Note: Products continue to be updated and iterative, the picture is for reference only, subject to the final delivery of products

Contents	Details	Standard configuration	Standard Edition	Deluxe Edition
Exterior	Color	White Black Red	★	★
Main structure	Steel Structure Skeleton	Hot-dip galvanized steel structure (with anti-corrosion treatment)	★	★
	Exterior panels	Fluorocarbon aluminum veneer	★	★
	Bathroom wall	Steel Structure & Waterproofing Insulation	★	★
	Waterproof measures	Fully enclosed waterproof technology	★	★
	Insulation measures	Flame retardant thermal insulation (polyurethane)	★	★
	Glass wall	6+16A+6 hollow LOW-E tempered glass	★	★
	Entry door	Advanced Smart Door Lock	★	★
	Support foot	Load-bearing support foot	★	★
	Equipment Room	alone Equipment room	★	★
	balcony	A semi enclosed balcony		
Interior decoration	Intelligent system	Whole-house intelligent voice control system (with background music)	★	★
	Ceiling	Fluorocarbon aluminum plate & advanced bamboo charcoal fiber board	★	★
	Wall	Fluorocarbon aluminum plate & advanced bamboo charcoal fiber board	★	★
	Floor	Composite wood floor	★	★
	Indoor lighting effects	Surround indoor atmosphere light strip	★	★
	Curtains	Smart blackout curtains	★	★
Bathroom products	Toilet/bathroom	Wash basin, bathroom mirror, shower, water box, toilet	★	★
Electrical appliances	Water heater	Midea or other brands	★	★
	Bathroom heater	Duct type four-in-one integrated	★	★
	Air conditioner	2 HP ducted type	★	★
	Water pipe antifreeze		★	★
Other optional configurations	Skylight			★
	Floor heating			★
	Outdoor lights	Peripheral atmosphere light strip (surround shape)		★
	Projector			★
	Fresh air ventilation system	centralized total heat exchange fresh air system		★
Factory standard configuration	Certificate/Instructions/Product Transportation Protection		★	★

X91 Configuration List

Product Model: Star Nest Space Mobile Cabin X91

Overall dimensions: length 9100mm, width 3300mm, height 3200mm Area : 30m²



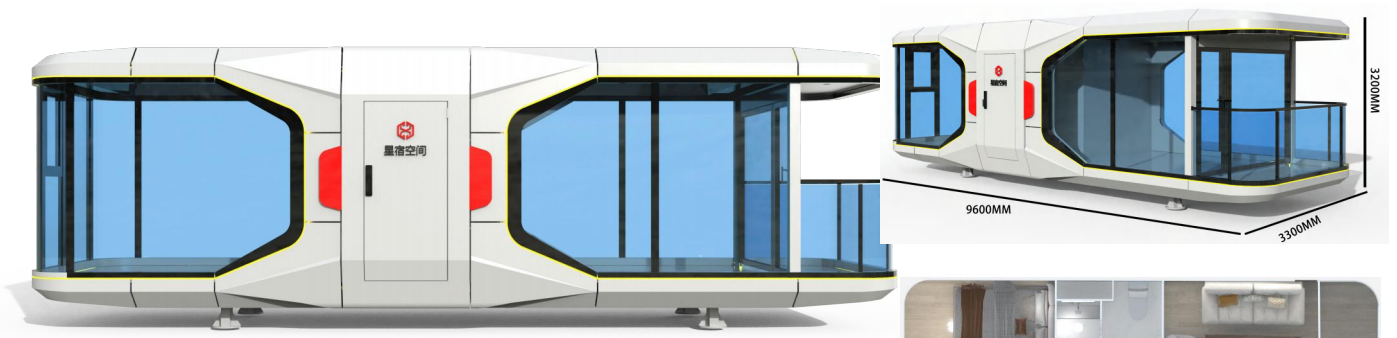
Note: Products continue to be updated and iterative, the picture is for reference only, subject to the final delivery of products

Contents	Details	Standard configuration	Standard Edition	Deluxe Edition
Exterior	Color	White Black Red	★	★
Main structure	Steel Structure Skeleton	Hot-dip galvanized steel structure (with anti-corrosion treatment)	★	★
	Exterior panels	Fluorocarbon aluminum veneer	★	★
	Bathroom wall	Steel Structure & Waterproofing Insulation	★	★
	Waterproof measures	Fully enclosed waterproof technology	★	★
	Insulation measures	Flame retardant thermal insulation (polyurethane)	★	★
	Glass wall	6+16A+6 hollow LOW-E tempered glass	★	★
	Entry door	Advanced Smart Door Lock	★	★
	Support foot	Load-bearing support foot	★	★
	Equipment Room	alone Equipment room	★	★
	balcony	A semi enclosed balcony		
Interior decoration	Intelligent system	Whole-house intelligent voice control system (with background music)	★	★
	Ceiling	Fluorocarbon aluminum plate & advanced bamboo charcoal fiber board	★	★
	Wall	Fluorocarbon aluminum plate & advanced bamboo charcoal fiber board	★	★
	Floor	Composite wood floor	★	★
	Indoor lighting effects	Surround indoor atmosphere light strip	★	★
	Curtains	Smart blackout curtains	★	★
Bathroom products	Toilet/bathroom	Wash basin, bathroom mirror, shower, water box, toilet	★	★
Electrical appliances	Water heater	Midea or other brands	★	★
	Bathroom heater	Duct type four-in-one integrated	★	★
	Air conditioner	2 HP ducted type	★	★
	Water pipe antifreeze		★	★
Other optional configurations	Skylight			★
	Floor heating			★
	Outdoor lights	Peripheral atmosphere light strip (surround shape)		★
	Projector			★
	Fresh air ventilation system	centralized total heat exchange fresh air system		★
Factory standard configuration	Certificate/Instructions/Product Transportation Protection		★	★

X96 Configuration List

Product Model: Star Nest Space Mobile Cabin X96

Overall dimensions: length 9600mm, width 3300mm, height 3200mm Area : 31.6m²



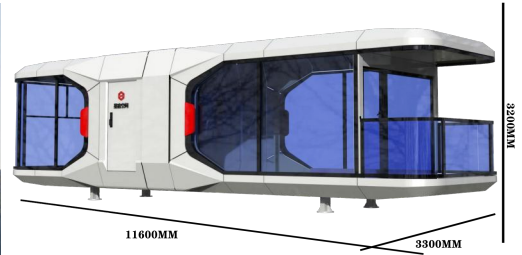
Note: Products continue to be updated and iterative, the picture is for reference only, subject to the final delivery of products

Contents	Details	Standard configuration	Standard Edition	Deluxe Edition
Exterior	Color	White Black Red	★	★
Main structure	Steel Structure Skeleton	Hot-dip galvanized steel structure (with anti-corrosion treatment)	★	★
	Exterior panels	Fluorocarbon aluminum veneer	★	★
	Bathroom wall	Steel Structure & Waterproofing Insulation	★	★
	Waterproof measures	Fully enclosed waterproof technology	★	★
	Insulation measures	Flame retardant thermal insulation (polyurethane)	★	★
	Glass wall	6+16A+6 hollow LOW-E tempered glass	★	★
	Entry door	Advanced Smart Door Lock	★	★
	Support foot	Load-bearing support foot	★	★
	Equipment Room	alone Equipment room	★	★
	balcony	A semi enclosed balcony		
Interior decoration	Intelligent system	Whole-house intelligent voice control system (with background music)	★	★
	Ceiling	Fluorocarbon aluminum plate & advanced bamboo charcoal fiber board	★	★
	Wall	Fluorocarbon aluminum plate & advanced bamboo charcoal fiber board	★	★
	Floor	Composite wood floor	★	★
	Indoor lighting effects	Surround indoor atmosphere light strip	★	★
	Curtains	Smart blackout curtains	★	★
Bathroom products	Toilet/bathroom	Wash basin, bathroom mirror, shower, water box, toilet	★	★
Electrical appliances	Water heater	Midea or other brands	★	★
	Bathroom heater	Duct type four-in-one integrated	★	★
	Air conditioner	2 HP ducted type	★	★
	Water pipe antifreeze		★	★
Other optional configurations	Skylight			★
	Floor heating			★
	Outdoor lights	Peripheral atmosphere light strip (surround shape)		★
	Projector			★
	Fresh air ventilation system	centralized total heat exchange fresh air system		★
Factory standard configuration	Certificate/Instructions/Product Transportation Protection		★	★

X116 Configuration List

Product Model: Star Nest Space Mobile Cabin X116

Overall dimensions: length 11600mm, width 3300mm, height 3200mm Area: : 38.3m²



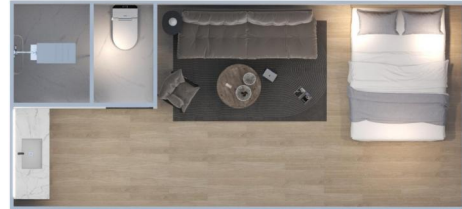
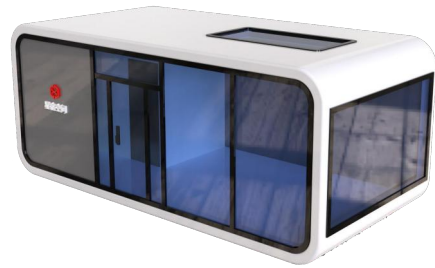
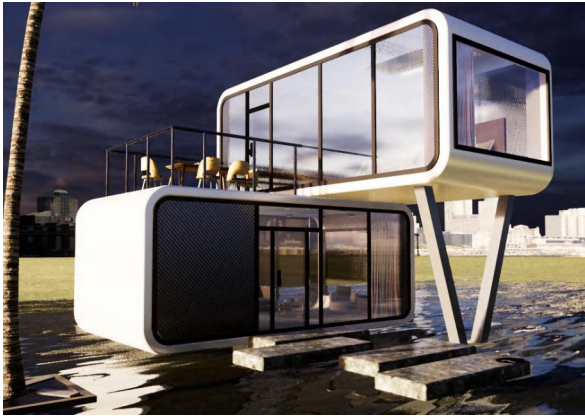
Note: Products continue to be updated and iterative, the picture is for reference only, subject to the final delivery of products

Contents	Details	Standard configuration	Standard Edition	Deluxe Edition
Exterior	Color	White Black Red	★	★
Main structure	Steel Structure Skeleton	Hot-dip galvanized steel structure (with anti-corrosion treatment)	★	★
	Exterior panels	Fluorocarbon aluminum veneer	★	★
	Bathroom wall	Steel Structure & Waterproofing Insulation	★	★
	Waterproof measures	Fully enclosed waterproof technology	★	★
	Insulation measures	Flame retardant thermal insulation (polyurethane)	★	★
	Glass wall	6+16A+6 hollow LOW-E tempered glass	★	★
	Entry door	Advanced Smart Door Lock	★	★
	Support foot	Load-bearing support foot	★	★
	Equipment Room	alone Equipment room	★	★
	balcony	A semi enclosed balcony		
Interior decoration	Intelligent system	Whole-house intelligent voice control system (with background music)	★	★
	Ceiling	Fluorocarbon aluminum plate & advanced bamboo charcoal fiber board	★	★
	Wall	Fluorocarbon aluminum plate & advanced bamboo charcoal fiber board	★	★
	Floor	Composite wood floor	★	★
	Indoor lighting effects	Surround indoor atmosphere light strip	★	★
	Curtains	Smart blackout curtains	★	★
Bathroom products	Toilet/bathroom	Wash basin, bathroom mirror, shower, water box, toilet	★	★
Electrical appliances	Water heater	Midea or other brands	★	★
	Bathroom heater	Duct type four-in-one integrated	★	★
	Air conditioner	3 HP ducted type	★	★
	Water pipe antifreeze		★	★
Other optional configurations	Skylight			★
	Floor heating			★
	Outdoor lights	Peripheral atmosphere light strip (surround shape)		★
	Projector			★
	Fresh air ventilation system	centralized total heat exchange fresh air system		★
Factory standard configuration	Certificate/Instructions/Product Transportation Protection		★	★

Apple shaped cabin Configuration List

Product Model: Star Nest Space Apple shaped cabin

Overall dimensions: length 7000mm, width 3300mm, height 3200mm Area: : 23.1m²



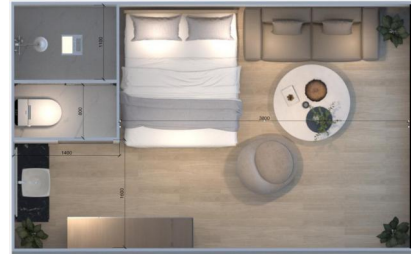
Note: Products continue to be updated and iterative, the picture is for reference only, subject to the final delivery of products

Contents	Details	Standard configuration	Standard Edition	Deluxe Edition
Exterior	Color	White Black Red	★	★
Main structure	Steel Structure Skeleton	Hot-dip galvanized steel structure (with anti-corrosion treatment)	★	★
	Exterior panels	Fluorocarbon aluminum veneer	★	★
	Bathroom wall	Steel Structure & Waterproofing Insulation	★	★
	Waterproof measures	Fully enclosed waterproof technology	★	★
	Insulation measures	Flame retardant thermal insulation (polyurethane)	★	★
	Glass wall	6+16A+6 hollow LOW-E tempered glass	★	★
	Entry door	Advanced Smart Door Lock	★	★
	Support foot	Load-bearing support foot	★	★
Interior decoration	Intelligent system	Whole-house intelligent voice control system (with background music)	★	★
	Ceiling	Fluorocarbon aluminum plate & advanced bamboo charcoal fiber board	★	★
	Wall	Fluorocarbon aluminum plate & advanced bamboo charcoal fiber board	★	★
	Floor	Composite wood floor	★	★
	Indoor lighting effects	Surround indoor atmosphere light strip	★	★
	Curtains	Smart blackout curtains	★	★
Bathroom products	Toilet/bathroom	Wash basin, bathroom mirror, shower, water box, toilet	★	★
Electrical appliances	Water heater	Midea or other brands	★	★
	Bathroom heater	Duct type four-in-one integrated	★	★
	Air conditioner	2 HP Gree Air Conditioner	★	★
	Water pipe antifreeze		★	★
Other optional configurations	Skylight			★
	Floor heating			★
	Outdoor lights	Peripheral atmosphere light strip (surround shape)		★
	Projector			★
	Fresh air ventilation system	centralized total heat exchange fresh air system		★
Factory standard configuration	Certificate/Instructions/Product Transportation Protection		★	★

M60 Configuration List

Product Model: Star Nest Space log cabin M60

Overall dimensions: length 6000mm, width 3500mm, height 3300mm Area: : 21m²



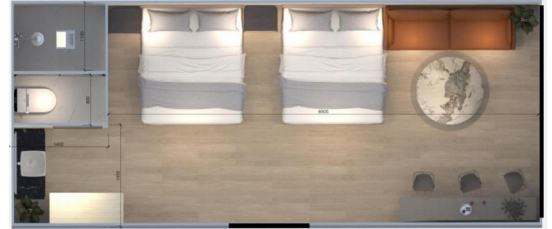
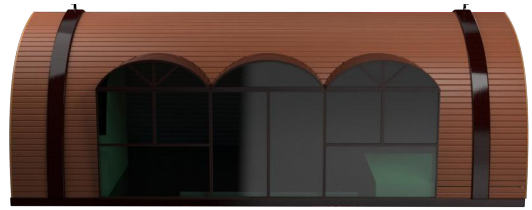
Note: Products continue to be updated and iterative, the picture is for reference only, subject to the final delivery of products

Contents	Details	Standard configuration	Standard Edition	Deluxe Edition
Exterior	Color	brown coffee color Black	★	★
Main structure	Steel Structure Skeleton	Hot-dip galvanized steel structure (with anti-corrosion treatment)	★	★
	Exterior panels	Fluorocarbon aluminum veneer	★	★
	Bathroom wall	Steel Structure & Waterproofing Insulation	★	★
	Waterproof measures	Fully enclosed waterproof technology	★	★
	Insulation measures	Flame retardant thermal insulation (polyurethane)	★	★
	Glass wall	6+16A+6 hollow LOW-E tempered glass	★	★
	Entry door	Advanced Smart Door Lock	★	★
	Support foot	Load-bearing support foot	★	★
Interior decoration	Ceiling	Fluorocarbon aluminum plate & advanced bamboo charcoal fiber board	★	★
	Wall	Fluorocarbon aluminum plate & advanced bamboo charcoal fiber board	★	★
	Floor	Composite wood floor	★	★
	Indoor lighting effects	Surround indoor atmosphere light strip	★	★
	Curtains	Smart blackout curtains	★	★
Bathroom products	Toilet/bathroom	Wash basin, bathroom mirror, shower, water box, toilet	★	★
Electrical appliances	Water heater	Midea or other brands	★	★
	Bathroom heater	Midea Bathroom heater	★	★
	Air conditioner	1.5 HP Gree Air Conditioner	★	★
	Water pipe antifreeze		★	★
Other optional configurations	Intelligent system	Whole-house intelligent voice control system (with background music)	★	★
	Skylight			★
	Floor heating			★
	Outdoor lights	Peripheral atmosphere light strip (surround shape)		★
	Projector			★
	Fresh air ventilation system	centralized total heat exchange fresh air system		★
Factory standard configuration	Certificate/Instructions/Product Transportation Protection		★	★

M86 Configuration List

Product Model: Star Nest Space log cabin M86

Overall dimensions: length 8600mm, width 3500mm, height 3300mm Area: : 30m²



Note: Products continue to be updated and iterative, the picture is for reference only, subject to the final delivery of products

Contents	Details	Standard configuration	Standard Edition	Deluxe Edition
Exterior	Color	brown coffee color Black	★	★
Main structure	Steel Structure Skeleton	Hot-dip galvanized steel structure (with anti-corrosion treatment)	★	★
	Exterior panels	Fluorocarbon aluminum veneer	★	★
	Bathroom wall	Steel Structure & Waterproofing Insulation	★	★
	Waterproof measures	Fully enclosed waterproof technology	★	★
	Insulation measures	Flame retardant thermal insulation (polyurethane)	★	★
	Glass wall	6+16A+6 hollow LOW-E tempered glass	★	★
	Entry door	Advanced Smart Door Lock	★	★
	Support foot	Load-bearing support foot	★	★
Interior decoration	Ceiling	Fluorocarbon aluminum plate & advanced bamboo charcoal fiber board	★	★
	Wall	Fluorocarbon aluminum plate & advanced bamboo charcoal fiber board	★	★
	Floor	Composite wood floor	★	★
	Indoor lighting effects	Surround indoor atmosphere light strip	★	★
	Curtains	Smart blackout curtains	★	★
Bathroom products	Toilet/bathroom	Wash basin, bathroom mirror, shower, water box, toilet	★	★
Electrical appliances	Water heater	Midea or other brands	★	★
	Bathroom heater	Midea Bathroom heater	★	★
	Air conditioner	2 HP Gree Air Conditioner	★	★
	Water pipe antifreeze		★	★
Other optional configurations	Intelligent system	Whole-house intelligent voice control system (with background music)	★	★
	Skylight			★
	Floor heating			★
	Outdoor lights	Peripheral atmosphere light strip (surround shape)		★
	Projector			★
	Fresh air ventilation system	centralized total heat exchange fresh air system		★
Factory standard configuration	Certificate/Instructions/Product Transportation Protection		★	★



感谢您的观看

THANK YOU FOR YOUR WATCHING

青岛凯子国际贸易有限公司

QINGDAOKAIZI INTERNATIONAL TRADE CO., LTD

青岛市市南区山东路1号海华大厦36D 266071

Address: Room 36D, Haihua Building, No. 1 Shandong Road, Shinan District, Qingdao 266071, China

会社名: INSO 株式会社

大阪市中央区北久宝寺町1丁目7番7-503号

Address: No. 7-503, 1-7, Kitakyuhoji-cho, Chuo-ku, OsakaE-

mail: nsk_jiang@126.com

inso@kaizigroup.com

URL: <https://www.kaizigroup.com/>

<https://en.kaizigroup.com/>